

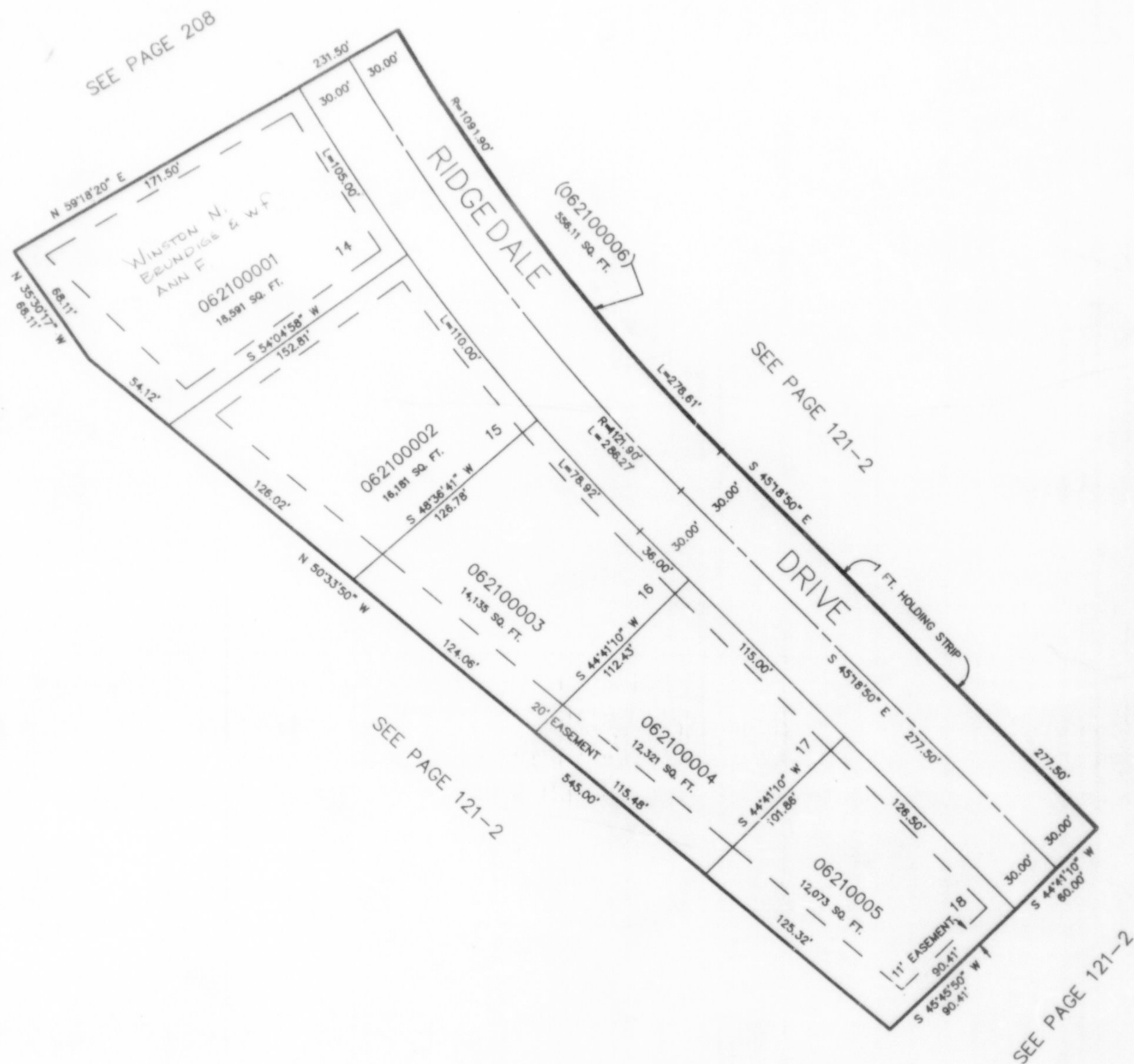
PART OF THE SW.1/4, SEC. 14, T.5N., R.1W., S.L.B. & M.
THE RIDGE AT REGENCY HEIGHTS NO. 3

210

TAXING UNIT: 25

IN OGDEN CITY
 SCALE 1" = 50'

UNLESS OTHERWISE SHOWN
 ALL LOTS OWNED BY:
 REGENCY DEV.



FOR COMPLETE ENG DATA SEE
 ORIGINAL DEDICATION PLAT IN
 BOOK 34, PAGE 42 OF RECORDS